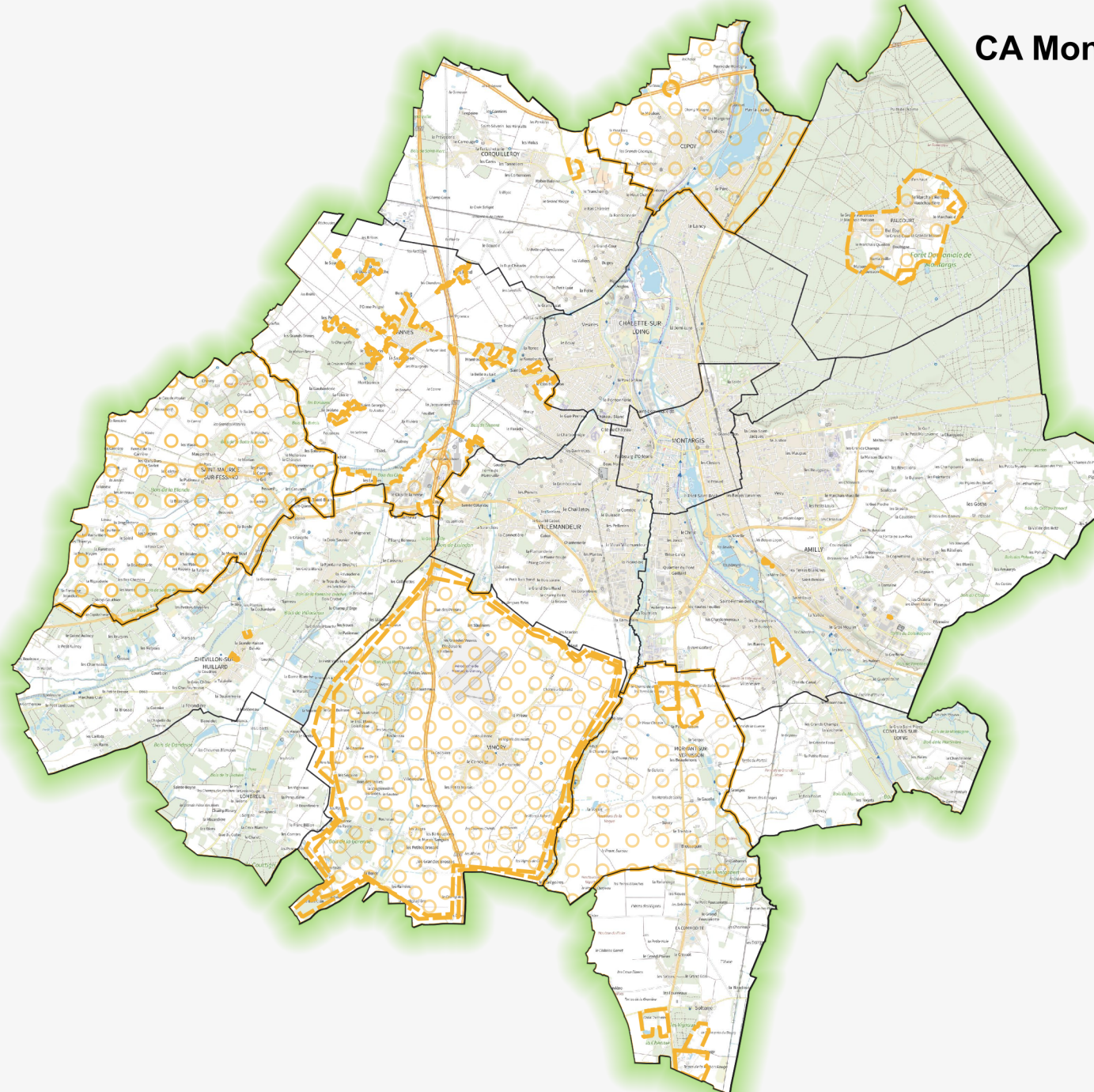


## CA Montargoise et Rives du Loing (AME)



ZAER retenues



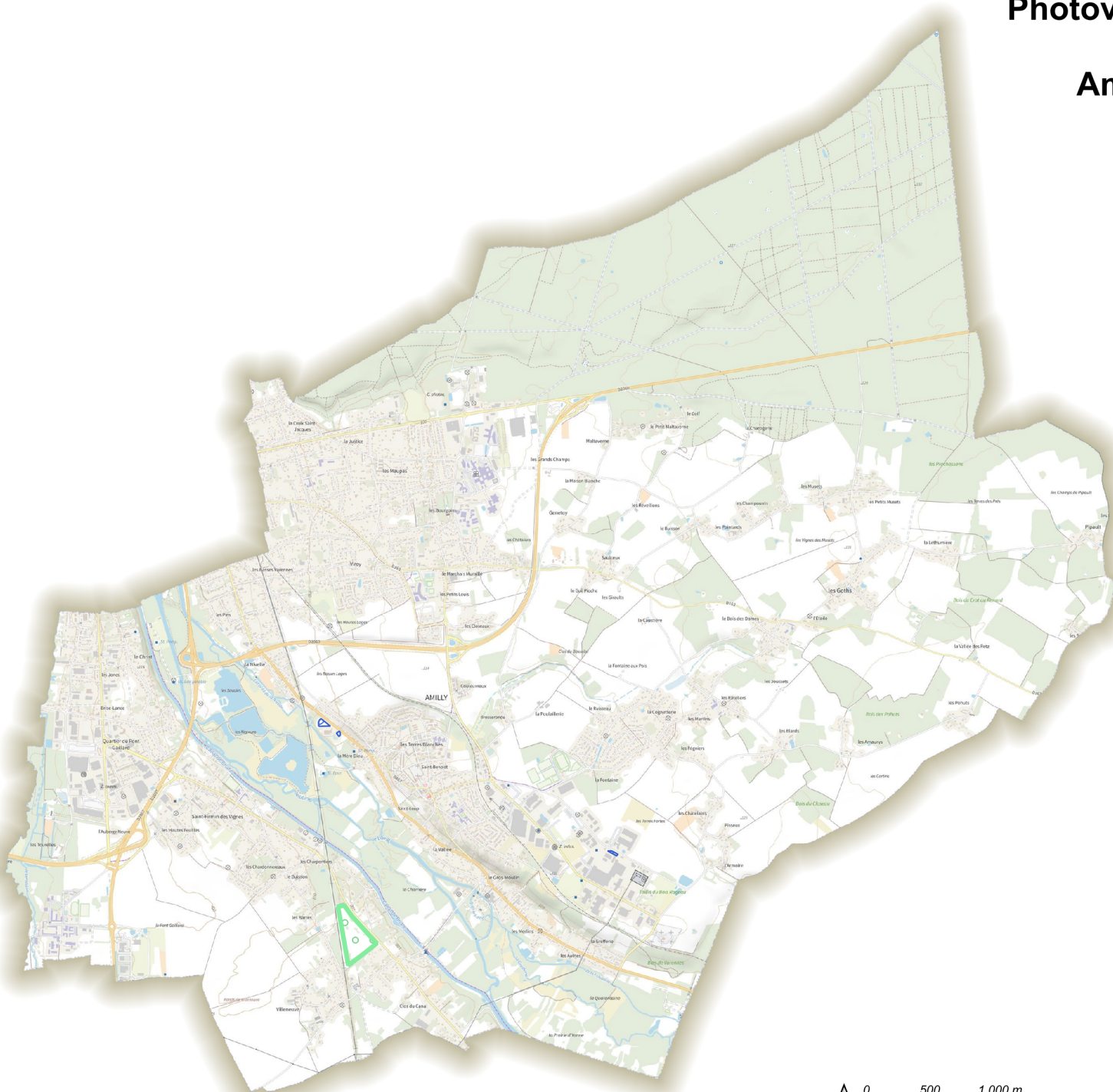
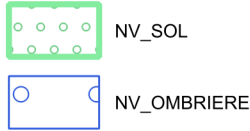
0

2,5

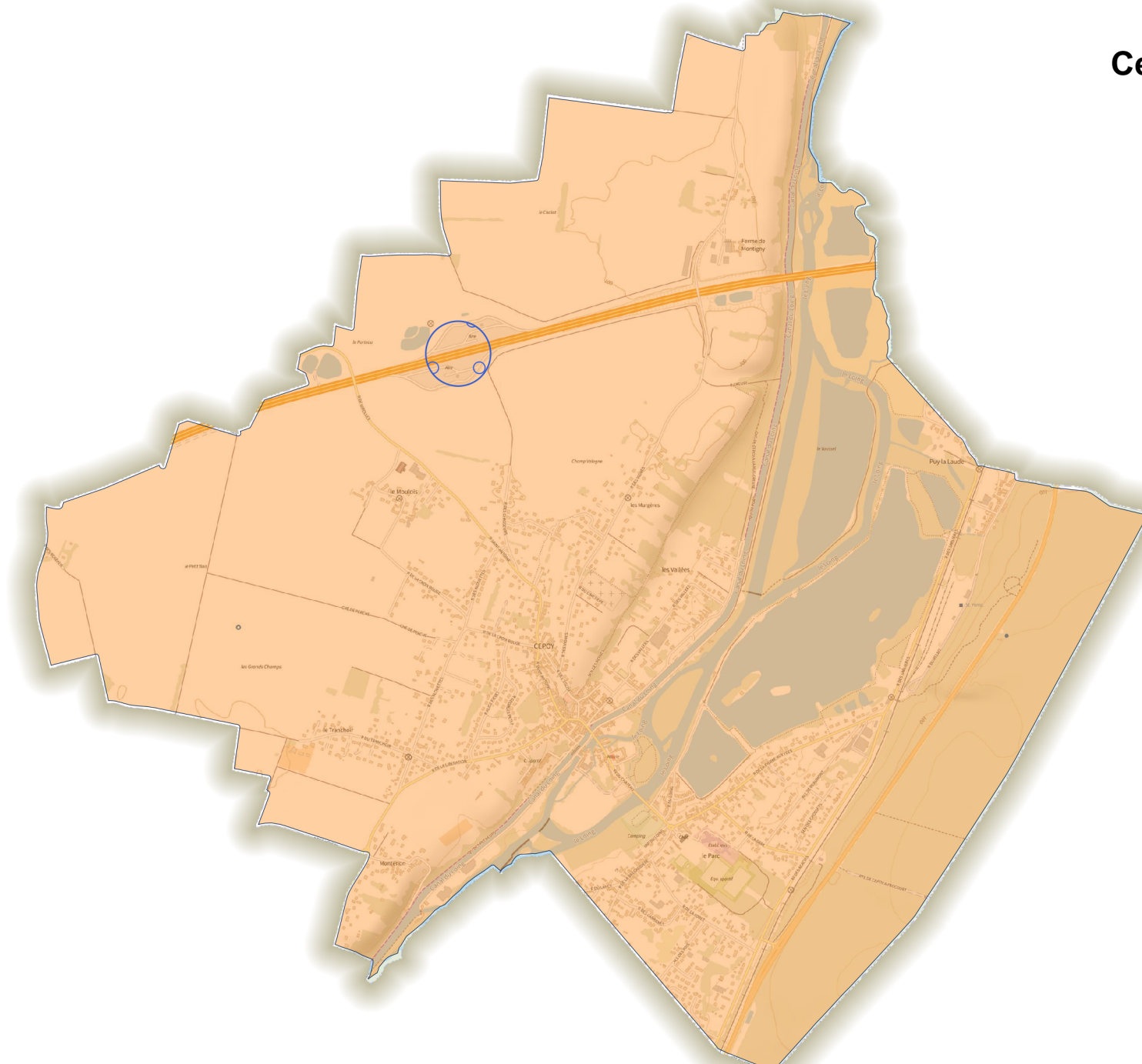
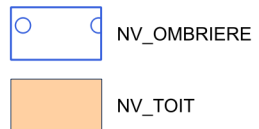
5 km

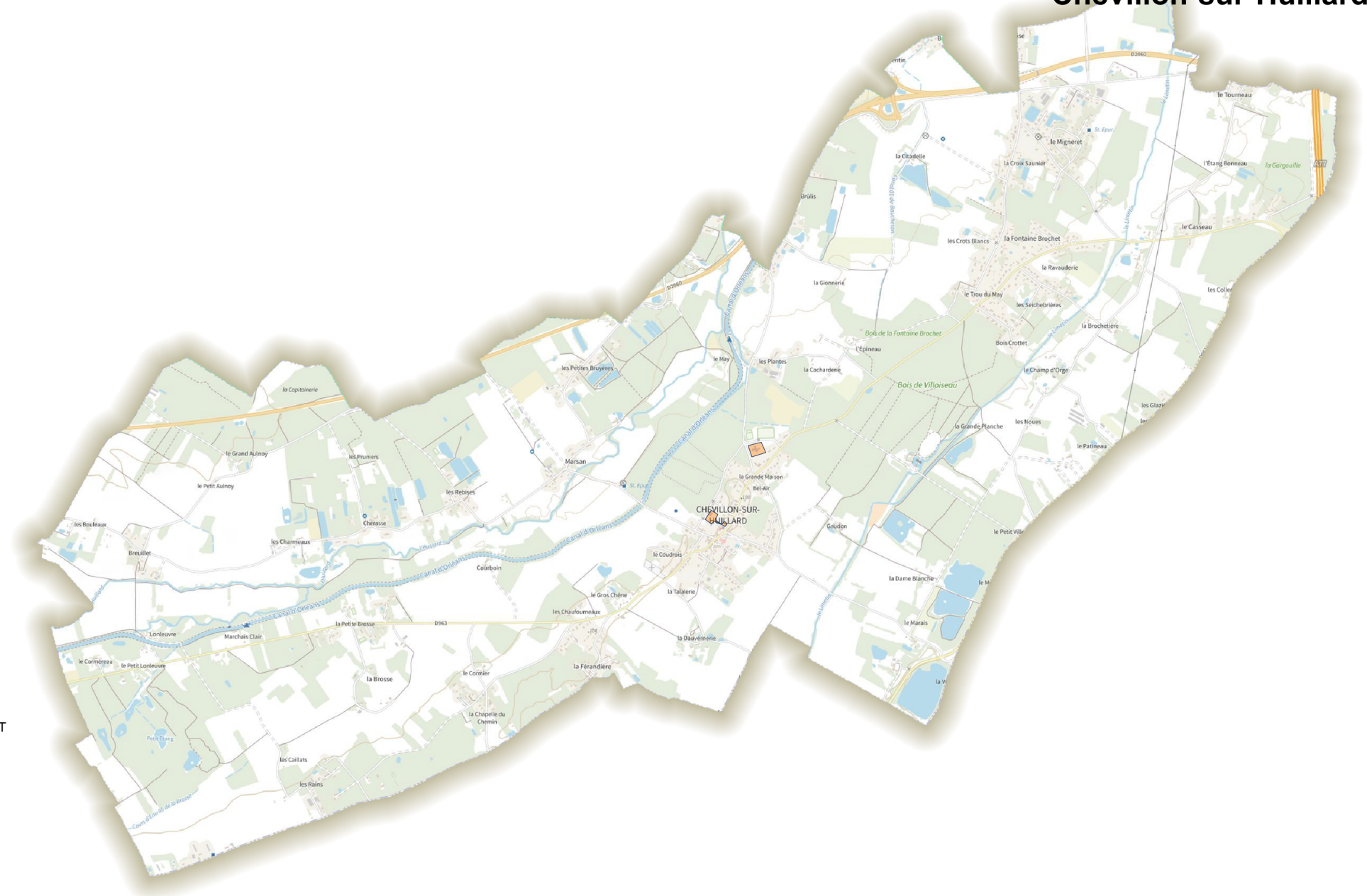
# Photovoltaïque

## Amilly



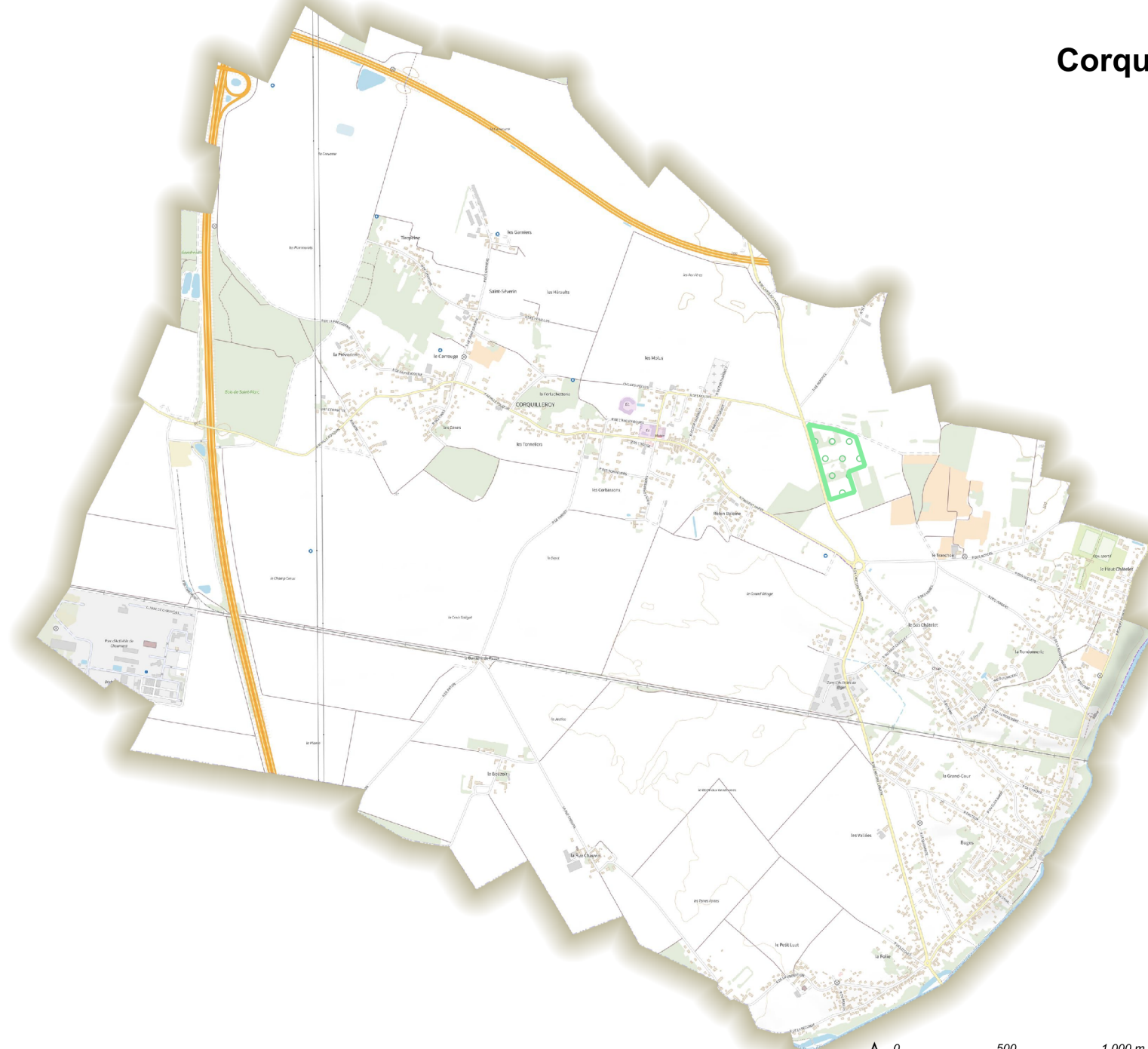






 NV\_TOIT





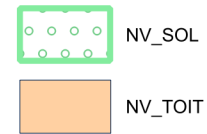
 NV\_SOL

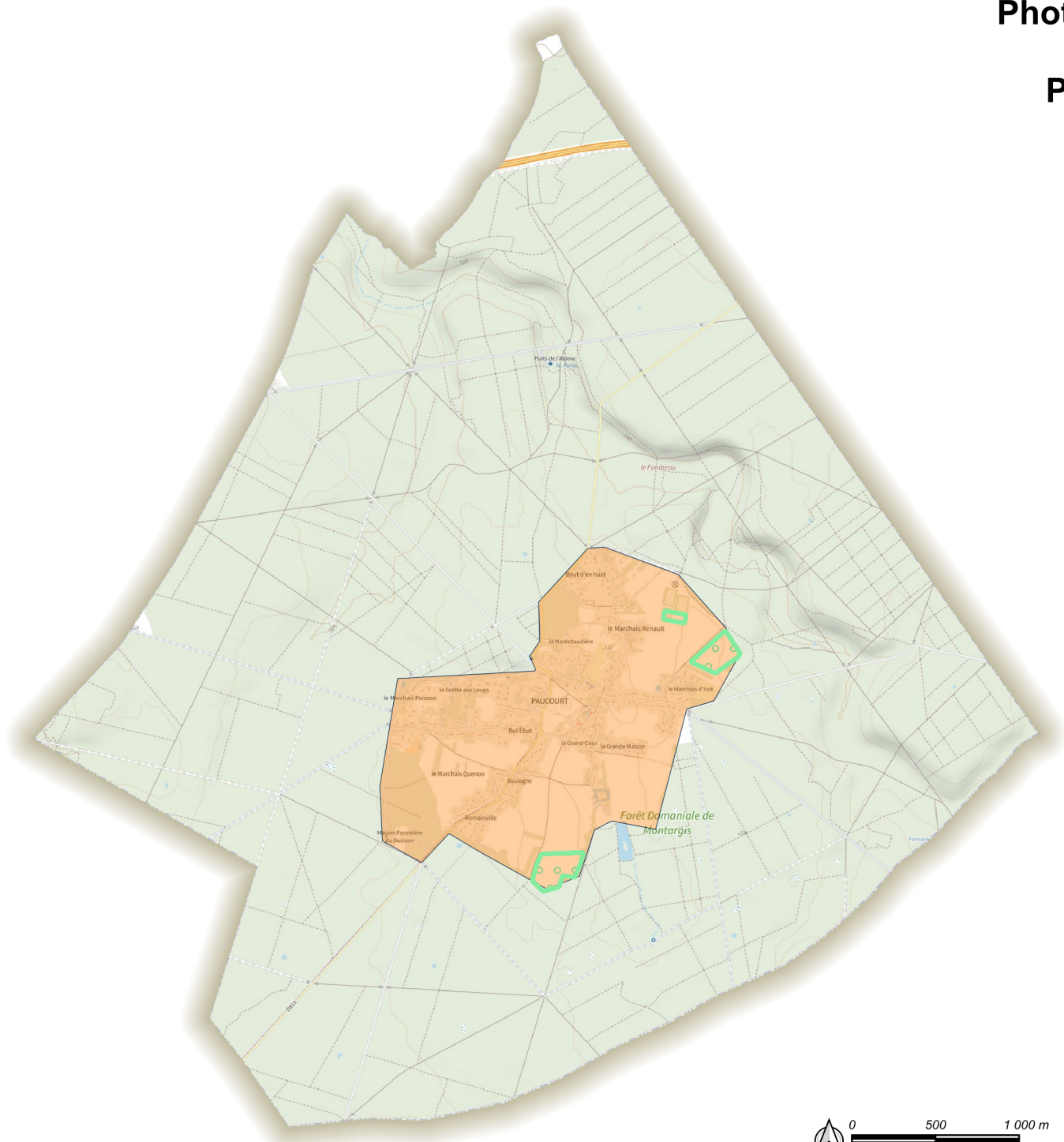




# Photovoltaïque

## Pannes



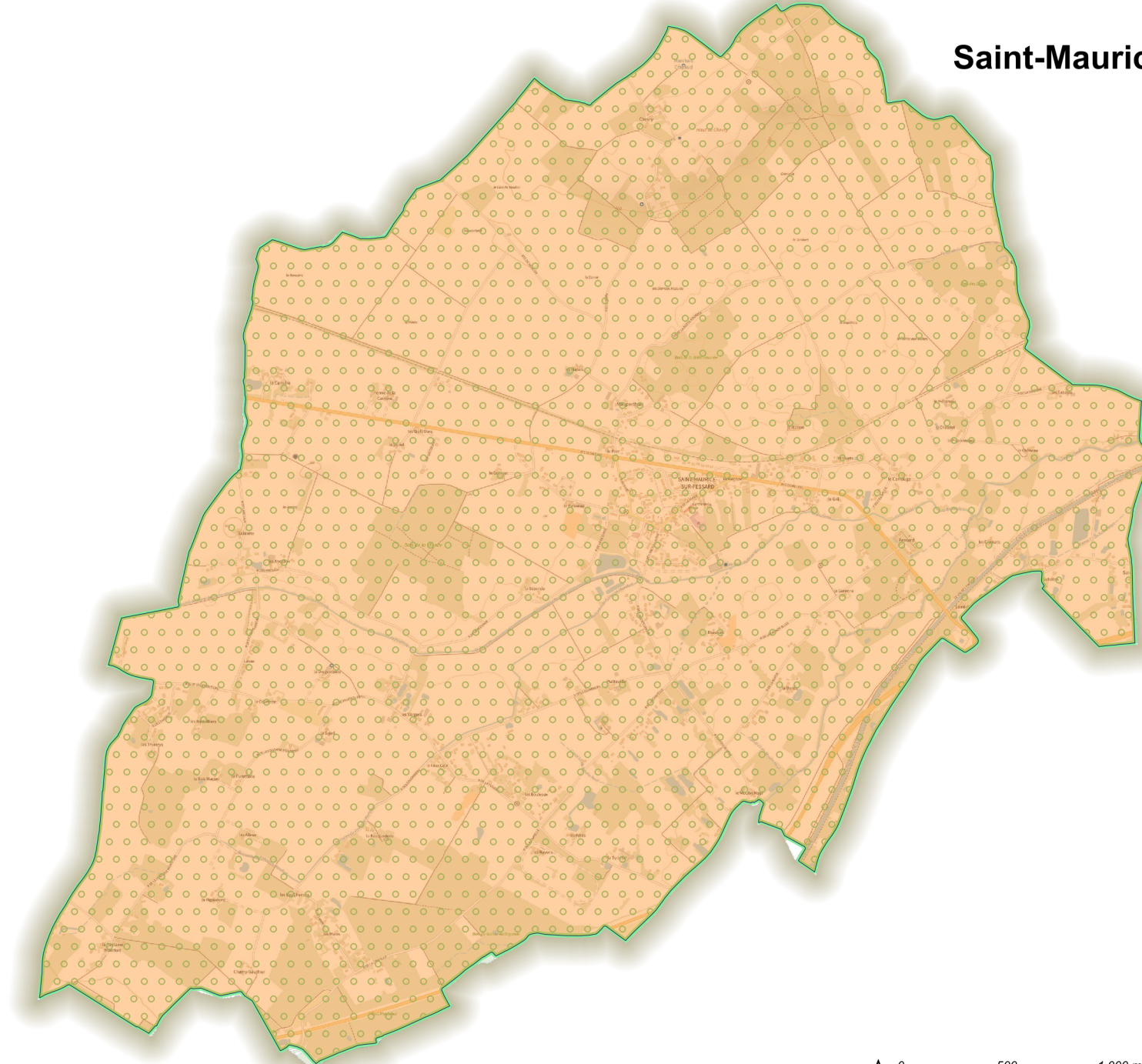
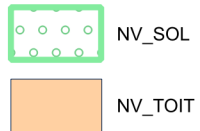


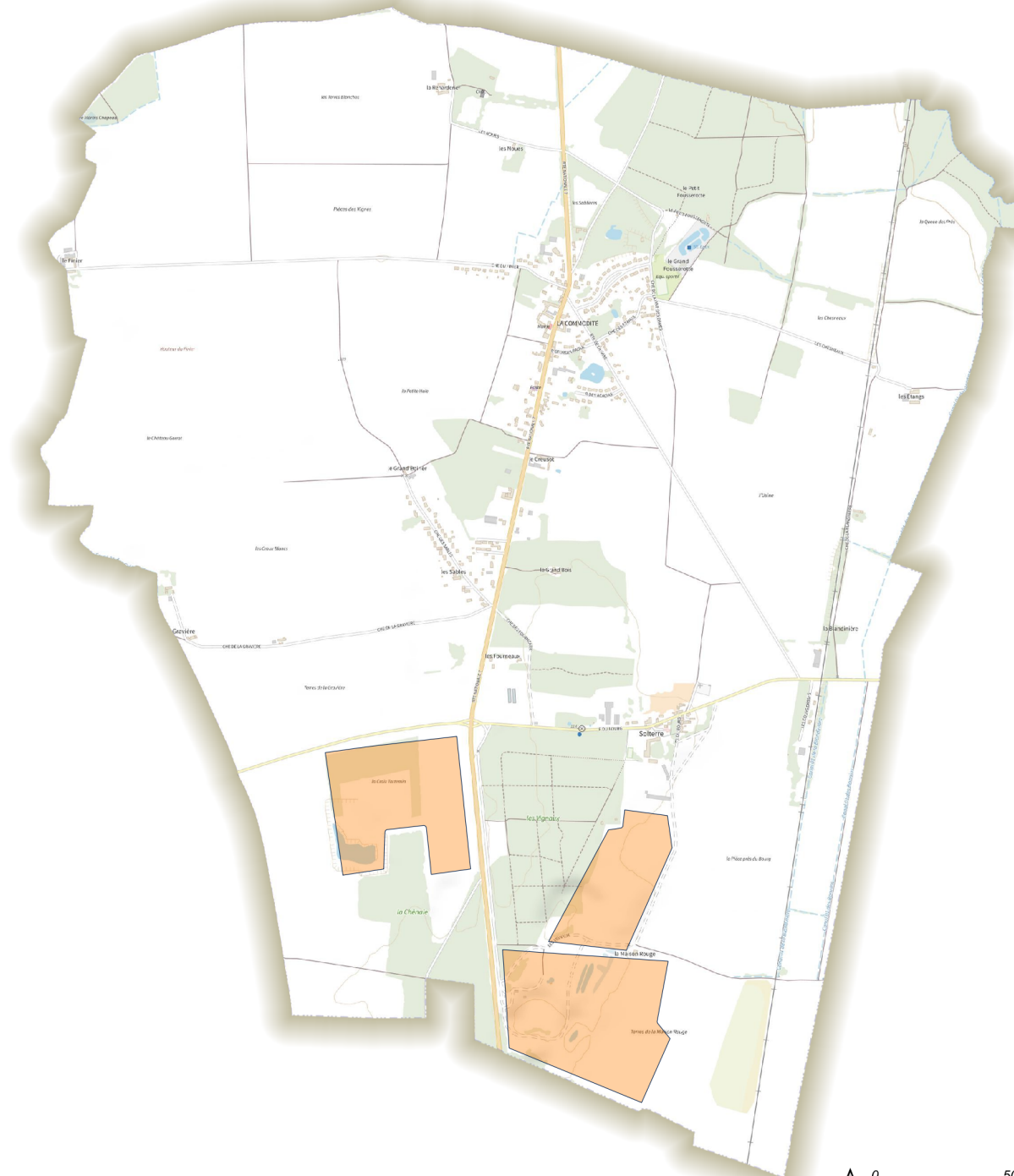
NV\_SOL



NV\_TOIT

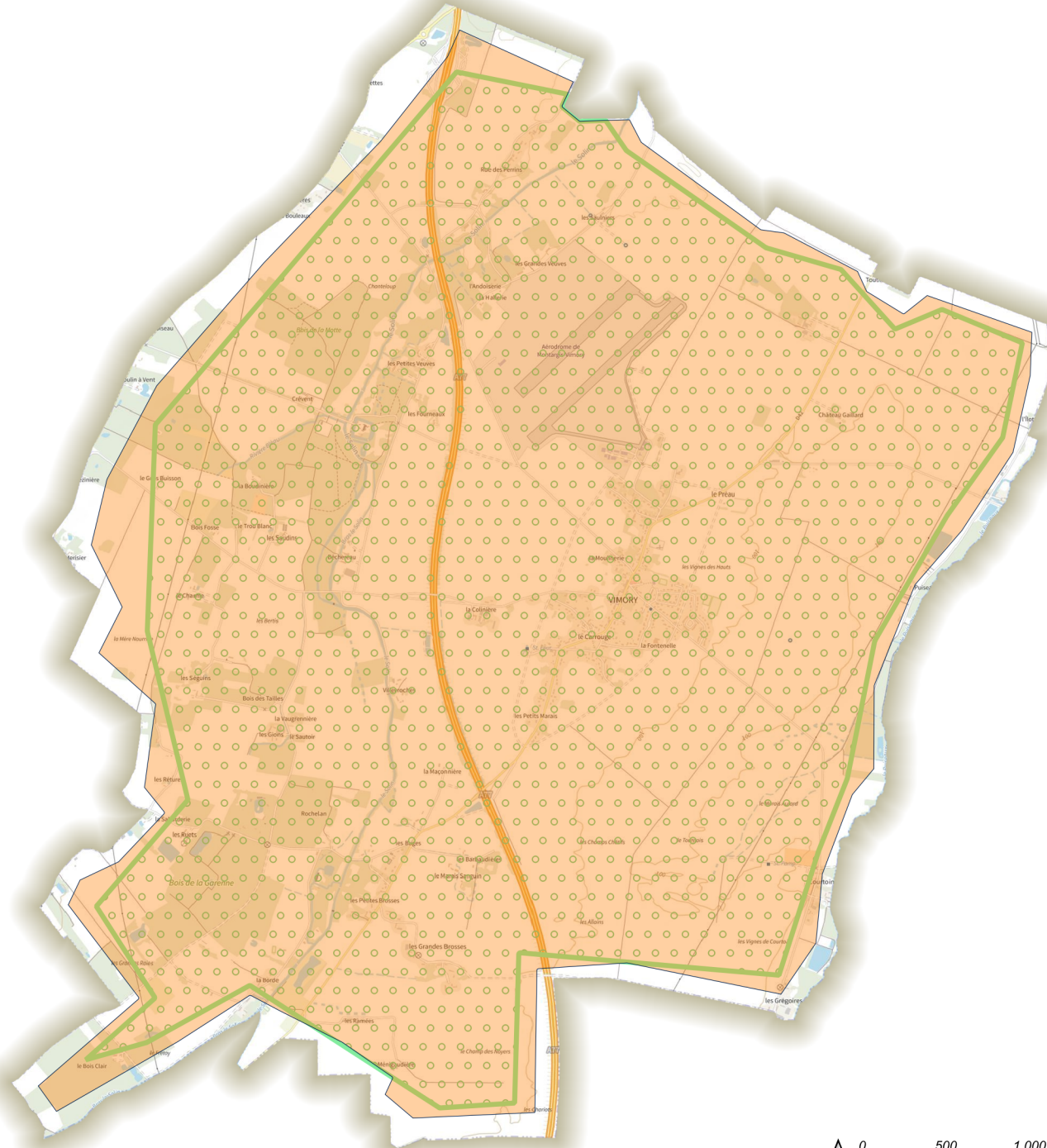








# Vimory



Service Urbanisme, Aménagement et Développement du Territoire

Réalisation - Conception LE MAUX Fabienne / PCPT - 14/03/2025